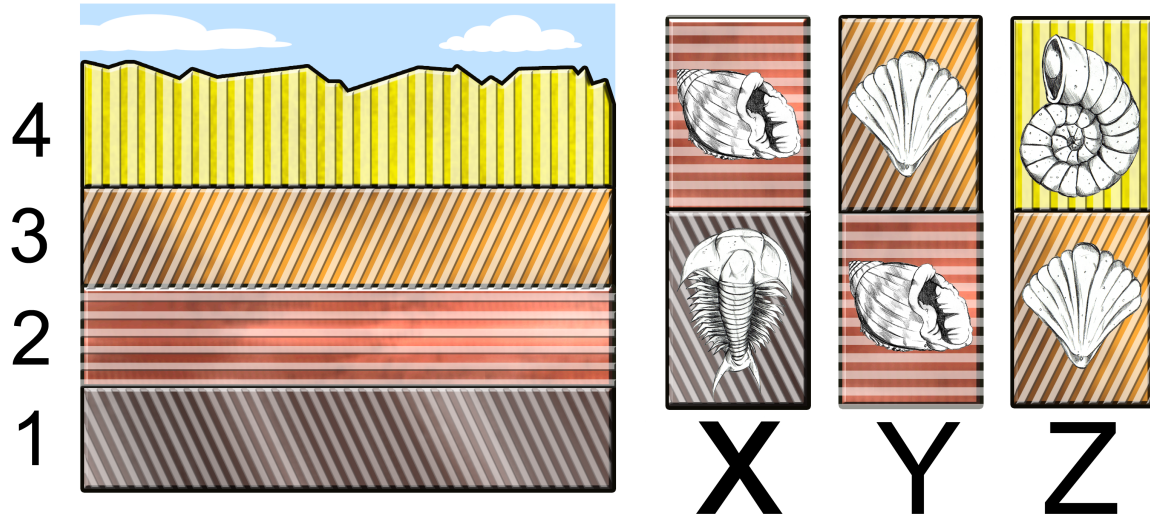
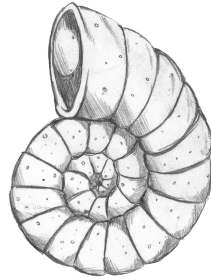


6.

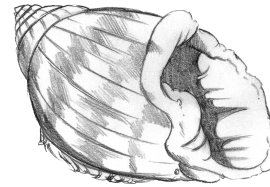


The rock column above shows the layers in a sedimentary rock formation. The three core samples to the right were taken from the rock column on the left. According to this information, which fossil is the oldest?

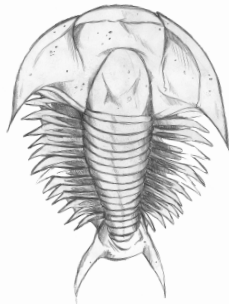
A.



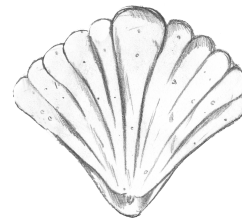
B.



C.



D.



7. Why are most fossils found in sedimentary rocks?

- A. Fossils can be distorted in metamorphic rocks.
- B. Igneous rocks were too hot when they formed.
- C. Sedimentary rocks are best for preserving organisms.
- D. all of the above